

4120 (JQC-4)



Dust Covered
26.8×21.5×22.3



Open Type
24×19×20

Features

- Small size, heavy contact load, capable of standing strong current of 45A at 14VDC.
- PC board mounting.
- Suitable for automatic control facilities and automobile application etc.
- Both European 11mm pole distance and American 8mm pole distance available.

Ordering Information

4120 C S 30 DC12V 1.6
1 2 3 4 5 6

- 1 Part number: 4120 (JQC-4)
 2 Contact arrangement: A:1A; B:1B; C:1C
 3 Enclosure: S: Sealed type; Z: Dust cover
 O: Open type
 4 Contact current: 15:15A; 20:20A; 30:30A; 45:45A
 5 Coil rated voltage(V): DC:6,9,12,18,24
 6 Coil power consumption: 1.6:1.6W; 1.9:1.9W

Contact Data

Contact Arrangement	1A (SPSTNO) 1B (SPSTNC) 1C (SPDT(B-M))
Contact Material	AgNi AgSnO ₂ AgCdO
Contact Rating (resistive)	1A: 45A/14VDC; 1B: 30A/14VDC; 1C:20A/120VAC, 15A/28VDC, NO: 45A/14VDC ,NC: 30A/14VDC
Max. Switching Power	560W 2400VA
Max. Switching Voltage	75VDC 380VAC
Contact Resistance or Voltage drop	<30mΩ
Operation life	Electrical 10 ⁵ Mechanical 10 ⁷
	Max. Switching Current:45A Item 4.12 of IEC 61810-7 Item 4.30 of IEC 61810-7 Item 4.31 of IEC 61810-7

Coil Parameter

Dash numbers	Coil voltage VDC		Coil resistance Ω ± 10%	Pickup voltage VDC(max) (70% of rated voltage)	Release voltage VDC(min) (10% of rated voltage)	Coil power consumption W	Operate Time ms	Release Time ms
	Rated	Max.						
006-1900	6	7.8	19	4.20	0.6	1.9	<5	<3
009-1900	9	11.7	42.6	6.30	0.9			
012-1600	12	15.6	90	8.40	1.2	1.6	<5	<3
018-1600	18	23.4	202.5	12.6	1.8			
024-1600	24	31.2	360	16.8	2.4			

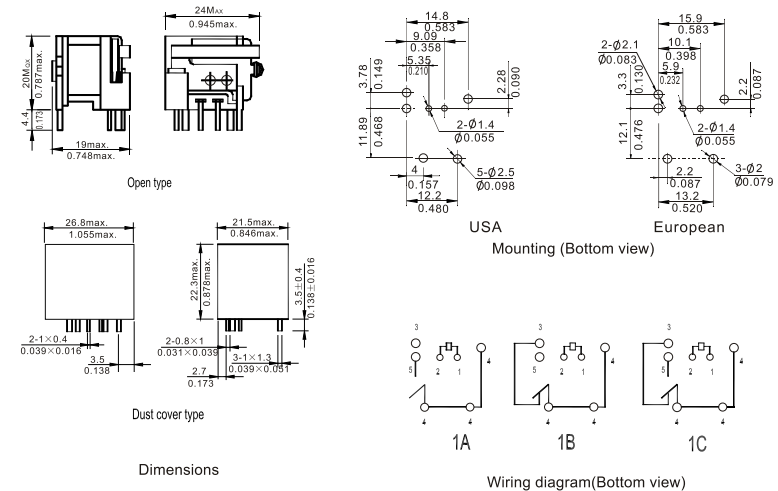
CAUTION: 1.The use of any coil voltage less than the rated coil voltage will compromise the operation of the relay.
 2.Pickup and release voltage are for test purposes only and are not to be used as design criteria.

Operation condition

Insulation Resistance	100MΩ min (at 500VDC)	Item 7 of IEC 61810-5
Dielectric Strength	50Hz 500V	Item 6 of IEC 61810-5
Between contacts	50Hz 750V	Item 6 of IEC 61810-5
Shock resistance	200m/s ² 11ms	IEC68-2-27 Test Ea
Vibration resistance	10~40Hz double amplitude 1.27mm	IEC68-2-6 Test Fc
Terminals strength	10N	IEC68-2-21 Test Ua1
Solderability	235℃ ± 2℃ 3 ± 0.5s	IEC68-2-20 Test Ta method 1
Ambient Temperature	-40~125℃	
Relative Humidity	85% (at 40℃)	IEC68-2-3 Test Ca
Mass	19g (Open type) 21g	

Dimensions

mm /inch



NOTES 1).Dimensions are in millimeters.
 2).Inch equivalents are given for general information only.

Reference Data

