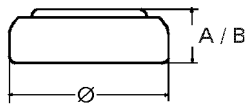


**Data Sheet**



<b>Type Number</b> .....	24626
<b>Designation IEC</b> .....	LR 9
<b>System</b> .....	Manganese Dioxide / Zinc / KOH - Electrolyte
<b>Nominal Voltage</b> .....	1,5 V
<b>Typical Capacity C</b> .....	210 mAh
Load 300 Ohm, at 20°C down to 0.9 V	
<b>Weight (approx.)</b> .....	2,9 g
<b>Volume</b> .....	1,01 ccm
<b>Coding</b> .....	Date of Manufacturing Month/Year
<b>Temperature Ranges</b>	
Storage .....	min max. -10°C 65°C
Discharge .....	-10°C 65°C
<b>Dimensions</b>	
Diameter (Ø) .....	min max. 15,20 16,00
Height (A/B) .....	5,6 6,20

**Typical Capacities (at 20°C)**

Discharge Type	Load	End Voltage:	0.9 V
Continuous 24h/d,7d/w Current [µA]:	300 Ω	Time: Capacity [mAh]: Energy [mWh]:	50 h 210 250

\* Contact VARTA if the application is intended to be outside the range of -10°C to +65°C.

*Information and contents in this data sheet are for reference purpose only.  
They do not constitute any warranty or representation and are subject to change without notice.  
For most current information and further details, please contact your VARTA representative.*