

### DC to DC Solid State Relay



#### Symbol Meaning

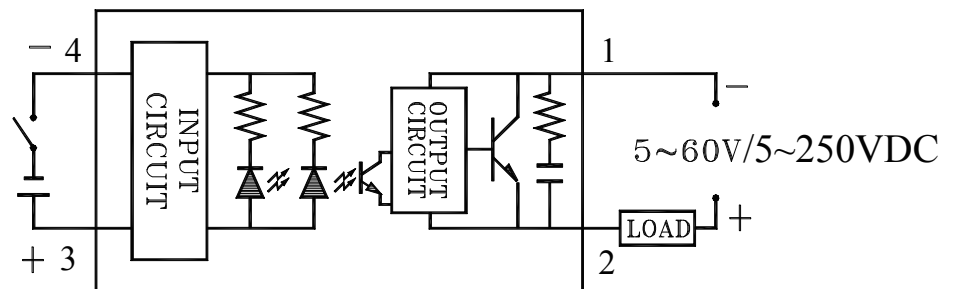
G	Greego
DH	Single phase
*	10-10A, 25-25A, 40-40A
*	60-60VDC, 110-110VDC, 250-250VDC
*	D-DC
*	D3-3-32Vdc

For example: GDH40240DD3, single phase, 40A, 240Vac, 3-32Vdc control

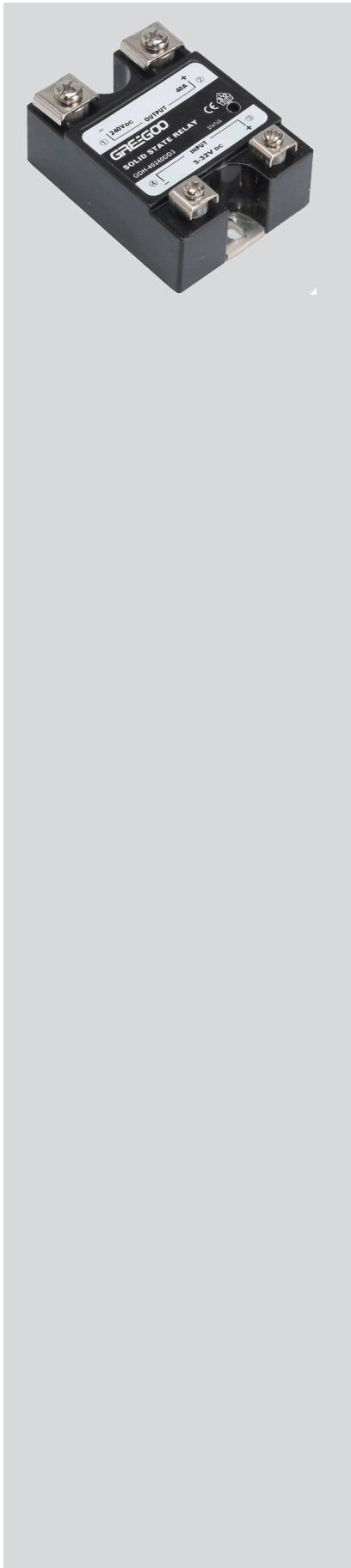
#### Specifications

Output Parameter	Units	Specification Limits						
Model No.:GDH	Amp	10	25	40	60	80	100	120
Load Current Range	Amp	10A	25A	40A	60A	80A	100A	120A
Input Date								
Operating Voltage	VDC	3-32	3-32	3-32	3-32	3-32	3-32	3-32
Min.ON/OFF Voltage	V	ON>3V, OFF<1V						
Trigger Current	mA	15mA/12VDC Max.						
Control Method		Isolated by photocouple						
Output Date								
Operating Voltage	VDC	5~60VDC/5~110VDC/5~250VDC						
Min.Blocking Voltage	VDC	350VDC						
Voltage Drop	V	1.2V/25°C						
Max.Durated Current	A	15A	30A	50A	70A	100A	120A	150A
Leakage Current	mA	≤0.8mA						
Response Time	ms	1ms(ON+OFF)						
Dielectric Strength	KVAC	Over 2.5KVAC/1min						
Isolation Strength	MΩ	Over 50MΩ/500VDC						
Operating Temperature	°C	-20°C~+80°C						
Weight (Typical)		144g						
Base Plate		Copper, Intensive ABS						
Case Color		Black						
Led Display		Yes						

#### Connection Diagram



DC to DC Solid State Relay



**Dimension**

