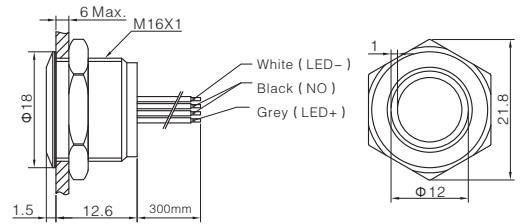


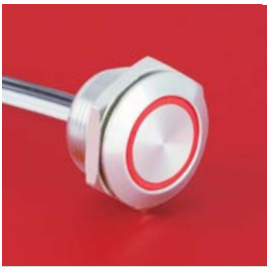
MTA16F-10E/Y/△/▲/S



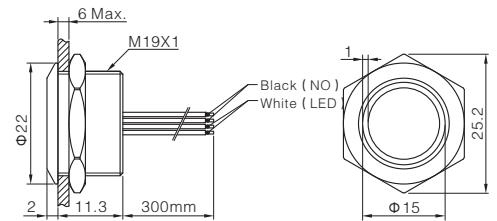
LED Color △:
R G Y B W
 LED Voltage▲:
 AC/DC 6V
 AC/DC 12V
 AC/DC 24V
 Crust Material:
 S Stainless steel



MTA19F-10E/Y/△/▲/S



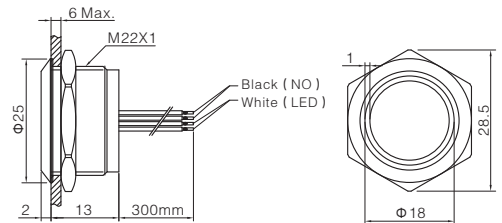
LED Color △:
R G Y B W
 LED Voltage▲:
 AC/DC 6V
 AC/DC 12V
 AC/DC 24V
 Crust Material:
 S Stainless steel



MTA22F-10E/Y/△/▲/S



LED Color △:
R G Y B W
 LED Voltage▲:
 AC/DC 6V
 AC/DC 12V
 AC/DC 24V
 Crust Material:
 S Stainless steel



Specification

Diameter of Mounting Hole: $\Phi 16$ mm, $\Phi 19$ mm, $\Phi 22$ mm
 Switch Rating: 50mA/24VDC
 Contact Configuration: 1NO
 Operation Type: Momentary
 Operation Travel: 0.5mm
 Terminal Type: wire leading 300mm
 Switching: A(Single-break contact)
 Panel Thickness: 1 ~ 6mm
 Torque: About 0.6Nm
 Mechanical Life: 500,000 cycles
 Electrical Life: 500,000 cycles
 Button: Stainless steel
 Body: Stainless steel
 Base: PBT
 Operating Force: About 3.8N(16mm), 7.8N(19mm), 5N(22mm)
 IP Degree: IP65, IK05
RoHS Made to order

Characteristic

Operation Temperature	-25℃~+55℃(No frozen) Keep the air in circulation
Operation Humidity	45~85%RH(No confensing)
Contact Resistance	≤50mΩ
Insulation Resistance	≥1000MΩ
Dielectric Strength	1500V, AC50 Hz, 1min
Vibration Resistance	50Hz, amplitude 1.2mm
Shock Resistance	>10g
Solder Resistance	320℃(or 30w soldering iron) no more than 2s

LED Ratings

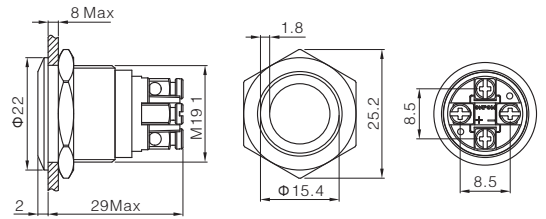
LED	Bi-direction LED(AC/DC)
LED Color	R G Y B W
Life	40000 hours(Reference)
Rated Voltage	AC/DC6V, AC/DC12V, AC/DC24V
Rated Current	5~15mA
Dropping Way	Internal resistor
Circuit Diagram	Using AC/DC LED, the terminals have no difference of anode and cathode

Note: DC LED and other voltage can be made to order

MTB19F-10E/△/▲/S



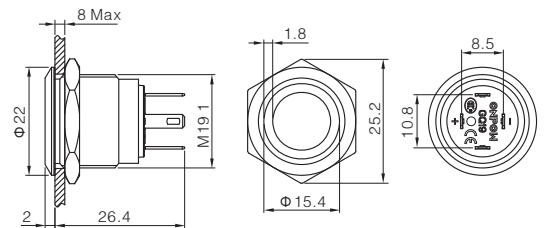
LED Color △: **R** **G** **Y** **B** **W**
 LED Voltage ▲:
 AC/DC 6V
 AC/DC 12V
 AC/DC 24V
 AC/DC 110V
 AC/DC 220V
 Crust Material:
 S Stainless steel



MTB19F-10E/J/△/▲/S



LED Color △: **R** **G** **Y** **B** **W**
 LED Voltage ▲:
 AC/DC 6V
 AC/DC 12V
 AC/DC 24V
 AC/DC 110V
 AC/DC 220V
 Crust Material:
 S Stainless steel



Specification

Diameter of Mounting Hole: Φ 19mm
 Switch Rating: 2A/36VDC
 0.5A/220V
 Contact Configuration: 1NO
 Operation Type: Momentary
 Operation Travel: **1mm**
 Switching: X(double-break slow-motion Operation Travel contact)
 Panel Thickness: 1 ~ 8mm
 Torque: About 0.6Nm
 Mechanical Life: 1,000,000 cycles
 Electrical Life: 200,000 cycles(36VDC)
 50,000cycles(220V)
 Button: Stainless steel
 Body: Stainless steel
 Base: PBT
 Operating Force: About 3N
 IP Degree: IP65(can made to IP67),IK08
RoHS Made to order

Characteristic

Operation Temperature	-25℃~+55℃(No frozen) Keep the air in circulation
Operation Humidity	45~85%RH(No confensing)
Contact Resistance	≤50mΩ
Insulation Resistance	≥1000MΩ
Dielectric Strength	1500V, AC50 Hz, 1min
Vibration Resistance	50Hz, amplitude 1.2mm
Shock Resistance	>10g
Solder Resistance	320℃(or 30w soldering iron) no more than 2s

LED Ratings

LED	Bi-direction LED(AC/DC)
LED Color	R G Y B W
Life	40000 hours(Reference)
Rated Voltage	AC/DC6V, AC/DC12V, AC/DC24V
Rated Current	5~15mA
Dropping Way	Internal resistor
Circuit Diagram	Using AC/DC LED, the terminals have no difference of anode and cathode

Note: DC LED and other voltage can be made to order