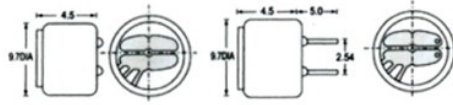


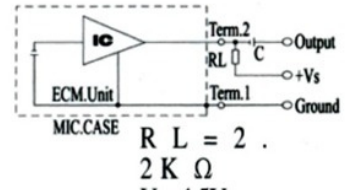


Dimensions

Lead Wire Type KPCM - 29B PCB Type KPCM - 29B - P



Schematic



$$R_L = 2 \text{ K } \Omega$$

Specifications

- Sensitivity :See Model No. Table
- Impedance :2.2K Ω Max
- Standard Power Supply :4.5V DC
- Current Consumption :0.5mA Max
- Sensitivity Reduction :within-3dB at 3V
- S/N Ratio :more than 60dB
- Directivity :Omnidirectional

Sensitivity (0dB=1v/Lub at 94Hz)	Sensitivity show method
-66 \pm 2dB	As 1 pa=10ub, therefore when it be pa or ub showed, there would be -20ub distance between them.
-64 \pm 2dB	
-62 \pm 2dB	For examples:
-60 \pm 2dB	-40dB(0dB=1v/pa)is equivalent to
-58 \pm 2dB	-60dB(0dB=1v/Lub)
-56 \pm 2dB	

Frequency Response $V_s=4.5V$

