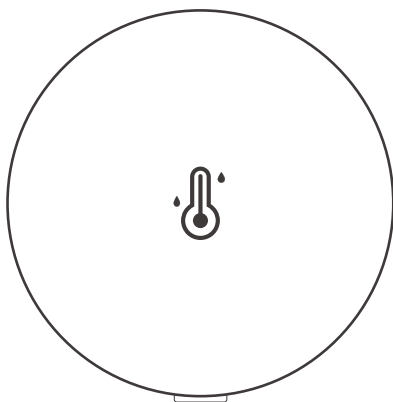




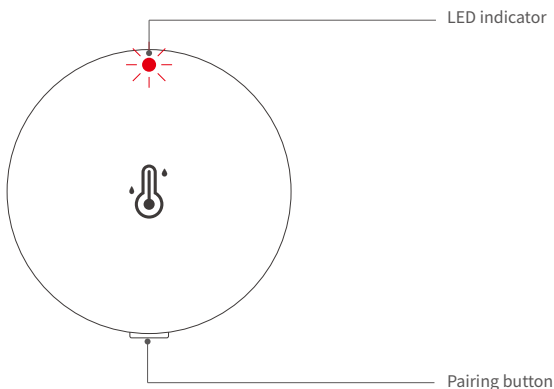
SNZB-02P

User manual V1.0



**Zigbee Temperature and
Humidity Sensor**

Product introduction



- ⚠ The device weight is less than 1kg , and the equipment is only suitable for mounting at heights ≤ 2 m

Instruction of LED indicator status

LED indicator status	Status instruction
Flash slowly	Pairing mode
Keep on for 3s and then keep off	Paired successfully
Exit flashing slowly and keep off	Pairing failed
Flash once quickly	Not added to the gateway, short press the Pairing button
Flash twice quickly	Added to the gateway, short press the Pairing button
Slow flash for 30 seconds	Abnormal communication

Features

SNZB-02P is a low-power temperature and humidity sensor that can detect the temperature and humidity of the environment in real time. It can be easily installed anywhere you want, simply by sticking it in place. Customized smart scenarios can be created to control various devices, ensuring your home environment is always comfortable.



Temperature and
humidity detection



Low power
consumption



Low Battery
Notification



Smart Scene

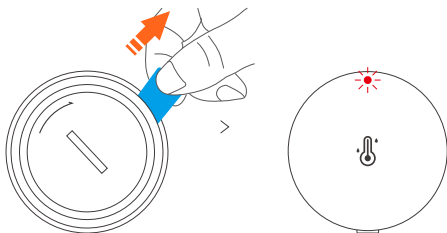
ⓘ The above features depend on the function of Zigbee gateway.

Download the eWeLink APP & Add SONOFF Zigbee gateway.

Q | eWeLink



Power on the device



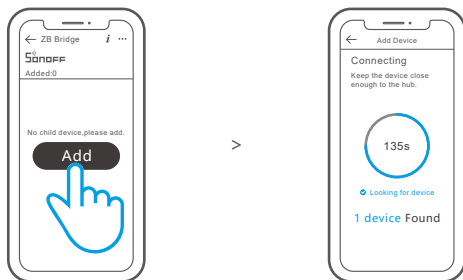
- ① Take out the battery insulation sheet to power on the device.
- ② After powering on the device for the first time, it will enter the pairing mode by default and the LED indicator "flashes slowly".



- ① The device will exit the pairing mode when it doesn't be paired to Zigbee gateway successfully within 3mins. If you want to access the pairing mode again, press and hold the device pairing button for 5s until the LED indicator "flashes slowly".
- ② If the device is the No battery version, please install the battery (CR2450) to power on the device.

Add the device to Zigbee Bridge

On the Zigbee gateway main page of the eWeLink App, click "Add" sub-devices and wait for the addition process to complete.



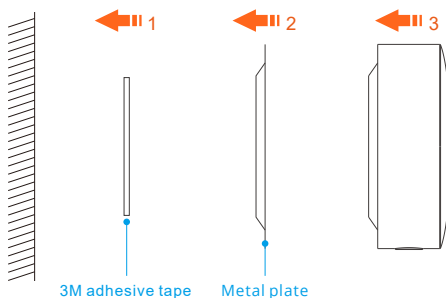
ⓘ If the device is failed to be added, please move the device closer to the Bridge and add it again.

Effective Communication Distance Verification

Install the device in the desired place, then press the Pairing button on the device. The LED indicator flashes twice mean the device and the device under the same Zigbee network (the router device or hub) are in the effective communication distance.

Installation

Fix the metal plate in a desired location, and then magnetically attach the device to the plate.



Specifications

Model	SNZB-02P
Input	3.0V ===
Wireless connection	Zigbee3.0
Battery model	CR2477
Working temperature	-10℃-60℃
Working humidity	5%-95% RH, non-condensing
Color	White
Casing material	ABS
Dimension	45x45x17.7mm

Factory Reset

Reset the device to factory settings by "Delete device" in the eWeLink App.

FCC Warning

This device complies with part 15 of the FCC Rules. Operation is subject to the following two conditions:

- (1) This device may not cause harmful interference, and
- (2) This device must accept any interference received, including interference that may cause undesired operation.

2.Changes or modifications not expressly approved by the party responsible for compliance could void the user's authority to operate the equipment.

Note: This equipment has been tested and found to comply with the limits for a Class B digital device, pursuant to part 15 of the FCC Rules. These limits are designed to provide reasonable protection against harmful interference in a residential installation. This equipment generates, uses and can radiate radio frequency energy and, if not installed and used in accordance with the instructions, may cause harmful interference to radio communications. However, there is no guarantee that interference will not occur in a particular installation. If this equipment does cause harmful interference to radio or television reception, which can be determined by turning the equipment off and on, the user is encouraged to try to correct the interference by one or more of the following measures:

- Reorient or relocate the receiving antenna.
- Increase the separation between the equipment and receiver.
- Connect the equipment into an outlet on a circuit different from that to which the receiver is connected.
- Consult the dealer or an experienced radio/TV technician for help.

FCC Radiation Exposure statement:

This equipment complies with FCC radiation exposure limits set forth for an uncontrolled environment. This equipment should be installed and operated with minimum distance of 20 cm between the radiator and your body. This transmitter must not be co-located or operating in conjunction with any other antenna or transmitter.

ISED Notice

This device contains licence-exempt transmitter(s)/receiver(s) that comply with Innovation, Science and Economic Development Canada's licence-exempt RSS(s). Operation is subject to the following two conditions:

(1) This device may not cause interference.

(2) This device must accept any interference, including interference that may cause undesired operation of the device.

This Class B digital apparatus complies with Canadian ICES-003.

This device complies with RSS-247 of Industry Canada.

Operation is subject to the condition that this device does not cause harmful interference.

L'émetteur/récepteur exempt de licence contenu dans le présent appareil est conforme aux CNR d'Innovation, Sciences et Développement économique Canada applicables aux appareils radio exempts de licence. L'exploitation est autorisée aux deux conditions suivantes :

(1) L'appareil ne doit pas produire de brouillage;

(2) L'appareil doit accepter tout brouillage radioélectrique subi, même si le brouillage est susceptible d'en compromettre le fonctionnement.

Cet appareil numérique de la Classe B conforme à la norme NMB-003 du Canada.

Cet appareil est conforme à la norme RSS-247 d'Industrie Canada. Le fonctionnement est soumis à la condition que cet appareil ne provoque pas d'interférences nuisibles.

ISED Radiation Exposure Statement

This equipment complies with ISED radiation exposure limits set forth for an uncontrolled environment.

This equipment should be installed and operated with minimum distance of 20 cm between the radiator and your body.

This transmitter must not be co-located or operating in conjunction with any other antenna or transmitter.

Cet équipement est conforme aux limites d'exposition aux rayonnements de la ISED établies pour un environnement non contrôlé.

Cet équipement doit être installé et fonctionner à au moins 20cm de distance d'un radiateur ou de votre corps.

Cet émetteur ne doit pas être co-localisé ou fonctionner en conjonction avec une autre antenne ou un autre émetteur.

SAR Warning

Under normal use of condition, this equipment should be kept a separation distance of at least 20cm between the antenna and the body of the user.

Dans des conditions normales d'utilisation, cet équipement doit être maintenu à une distance d'au moins 20 cm entre l'antenne et le corps de l'utilisateur.

WEEE Warning



WEEE Disposal and Recycling Information All products bearing this symbol are waste electrical and electronic equipment (WEEEas in directive 2012/19/EU) which should not be mixed with unsorted householdwaste. Instead, you should protect human health and the environment by handingover your waste equipment to a designated collection point for the recycling of waste electricaland electronic equipment, appointed by the government or local authorities. Correct disposaland recycling will help prevent potential negative consequences to the environment and human health. Please contact the installer or local authorities for more information about thelocation as well as terms and conditions of such collection points.

EU Declaration of Conformity

Hereby, Shenzhen Sonoff Technologies Co., Ltd. declares that the radio equipment type SNZB-02P is in compliance with Directive 2014/53/EU. The full text of the EU declaration of conformity is available at the following internet address:

<https://sonoff.tech/usermanuals>



Do not ingest battery, Chemical Burn Hazard.

This product contains a coin / button cell battery.

If the coin / button cell battery is swallowed, it can cause severe internal burns in just 2 hours and can lead to death.

Keep new and used batteries away from children.

If the battery compartment does not close securely, stop using the product and keep it away from children.

If you think batteries might have been swallowed or placed inside any part of the body, seek immediate medical attention.

Replacement of a battery with an incorrect type that can defeat a safeguard (for example, in the case of some lithium battery types).

Disposal of a battery into fire or a hot oven, or mechanically crushing or cutting of a battery, that can result in an explosion.

Leaving a battery in an extremely high temperature surrounding environment that can result in an explosion or the leakage of flammable liquid or gas.

A battery subjected to extremely low air pressure that may result in an explosion or the leakage of flammable liquid or gas.

Scatola	Manuale	Neto
PAP 21	PAP 22	EVA 1
Carta	Carta	Plastica
RACCOLTA DIFFERENZIATA		
Verifica le disposizioni del tuo Comune. Separa le componenti e conferiscile in modo corretto.		

For CE Frequency:

Operation frequency Range

Zigbee: 2405~2480MHz

RF output Power

Zigbee: :≤10dBm

SONOFF

Shenzhen Sonoff Technologies Co., Ltd.

3F & 6F, Bldg A, No. 663, Bulong Rd, Shenzhen, Guangdong, China

ZIP code: 518000

Website: sonoff.tech

MADE IN CHINA



FR

**Cet appareil
et sa batterie
se recyclent**

À DÉPOSER
EN MAGASIN



OU

À DÉPOSER
EN DÉCHÈTERIE



Points de collecte sur www.quefairedemesdechets.fr
Privilégiez la réparation ou le don de votre appareil !